

SETTING UP A WI-FI CONNECTION IN THE LIBRARY OF PARLIAMENT – WINDOWS 7

To connect your device to **ogyk-auth** Wireless Network, please follow the instructions of the step-by-step guide below.

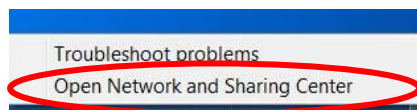
Step 1

- Please enable Wi-Fi connections on your device.
- At the bottom-right corner of the screen, you will find the “Network” icon.



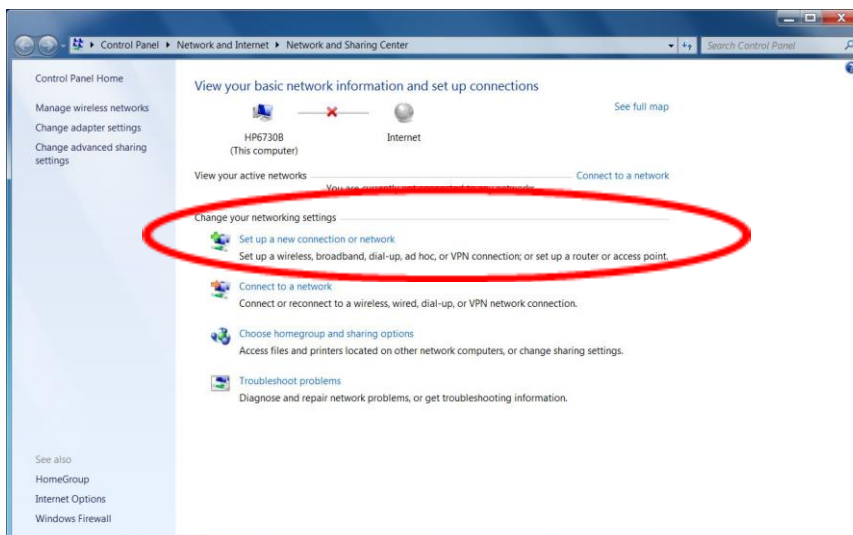
Step 2

- Right-click on the Network icon, then open Network and Sharing Centre.

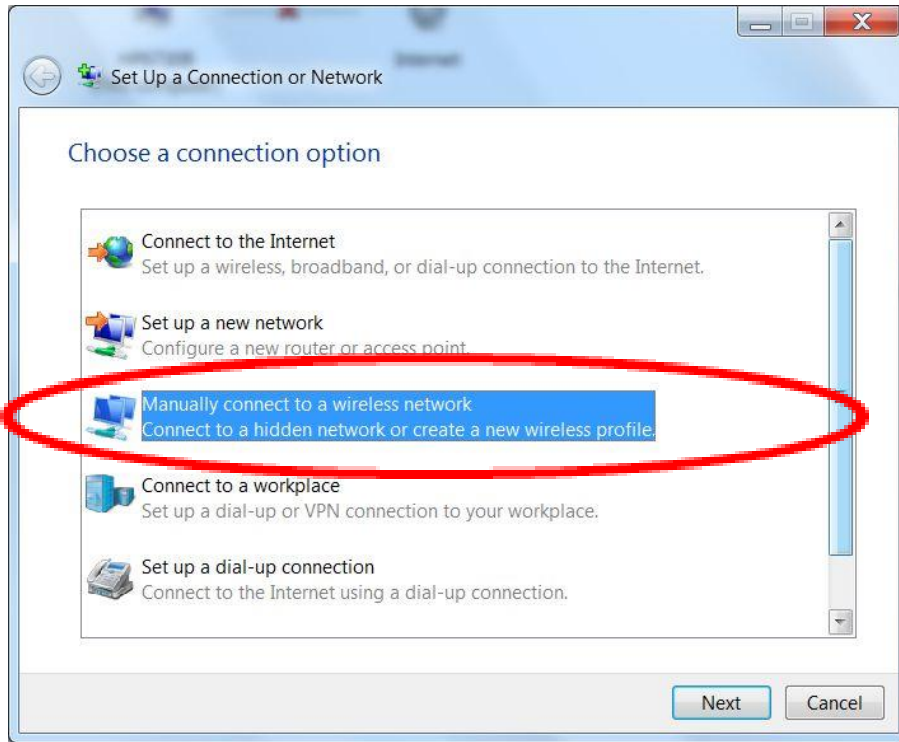


Step 3

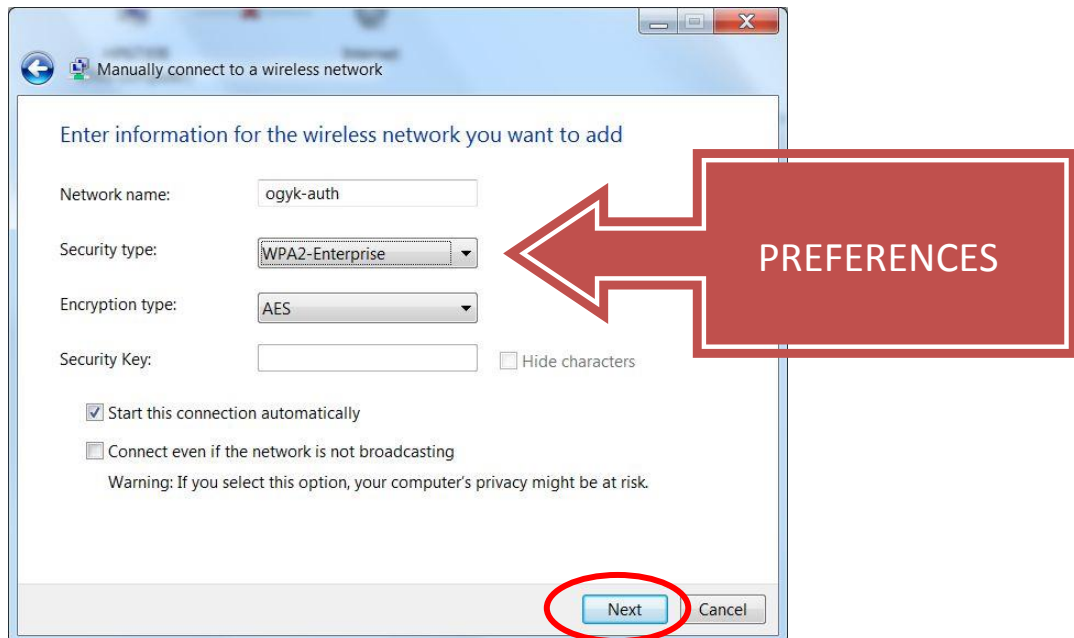
- Please set up a new Wi-Fi network as follows:



Step 4

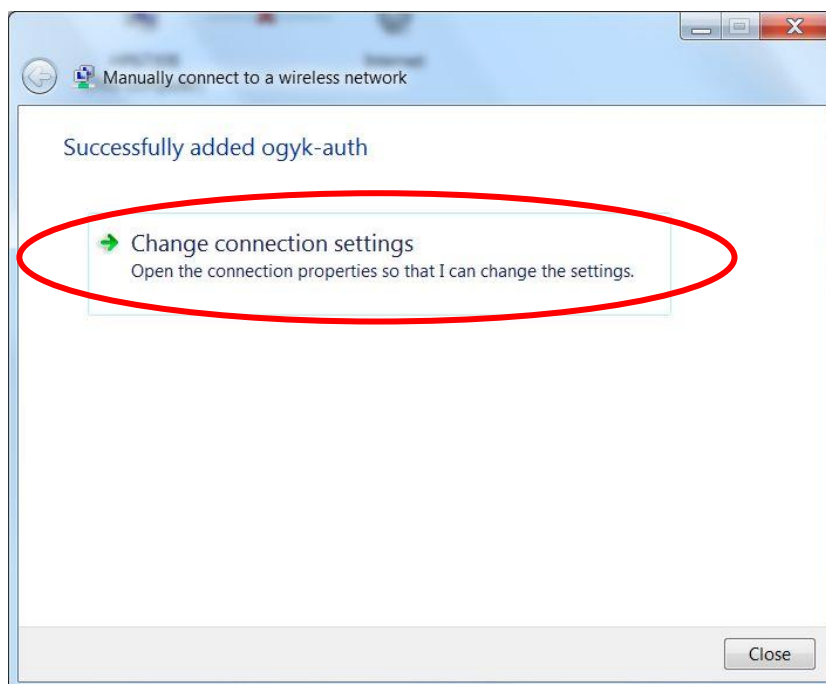


Step 5



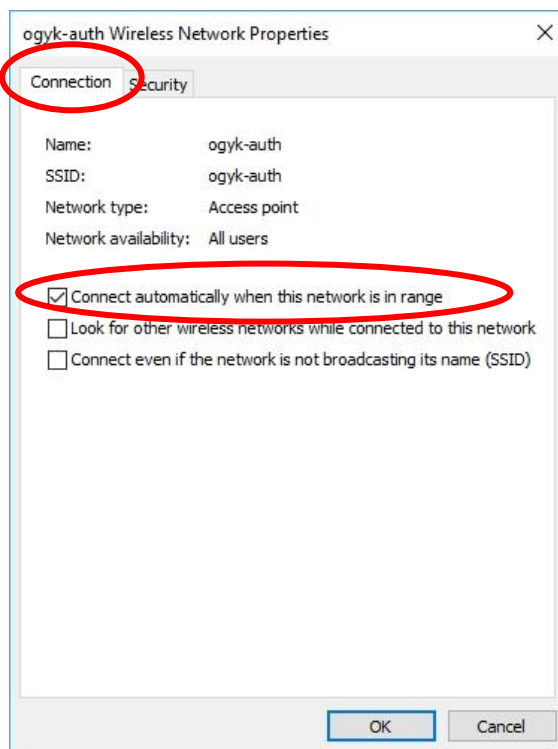
Step 6

- For the normal functioning of the connection, you need to apply the following settings:



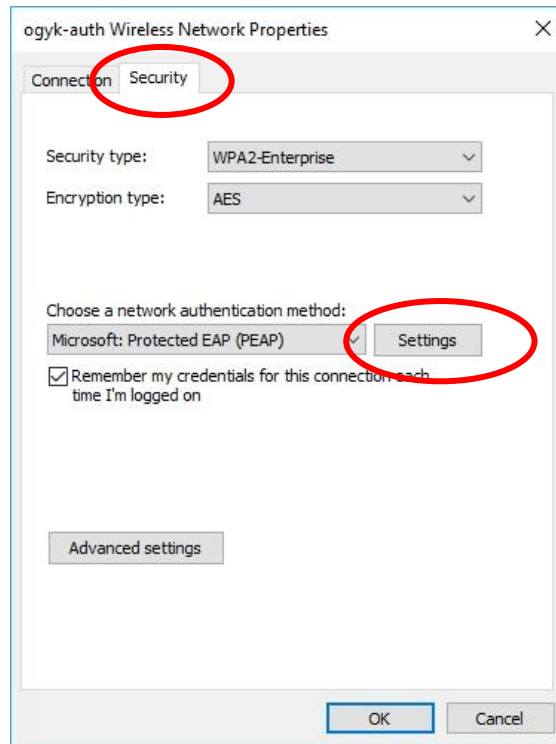
Step 7

- On 'Connection' tab, click 'Connect automatically...'



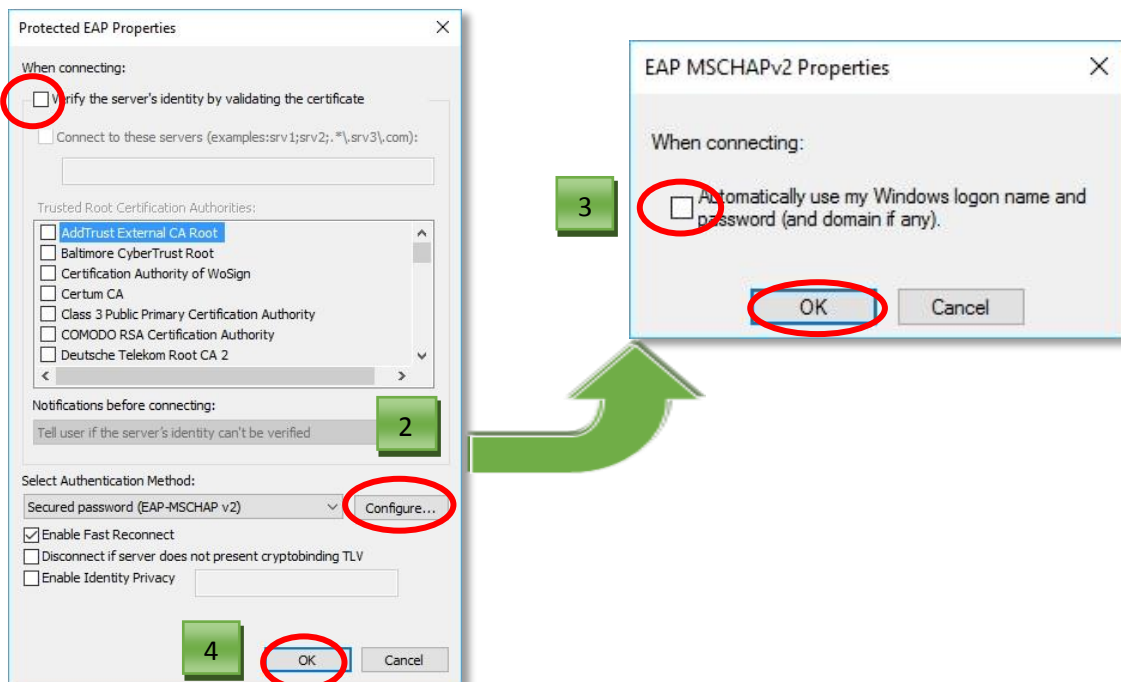
Step 8

- On 'Security' tab click 'Settings'



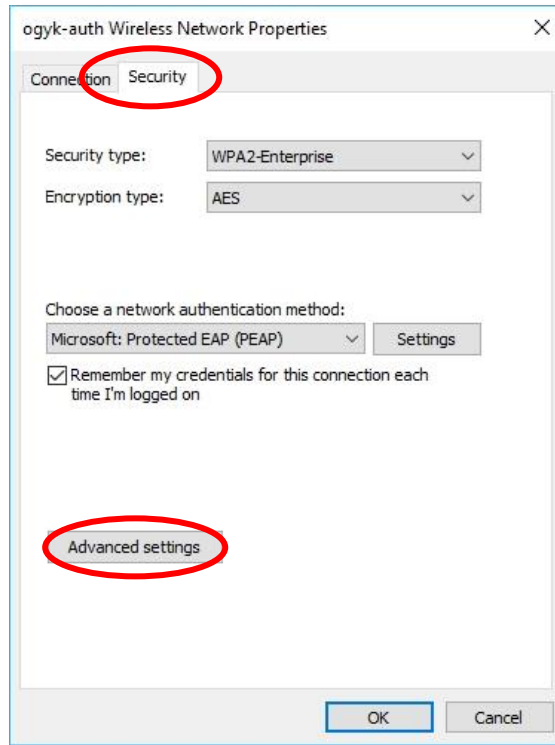
Step 9

- Unclick the two checkboxes and click 'OK'



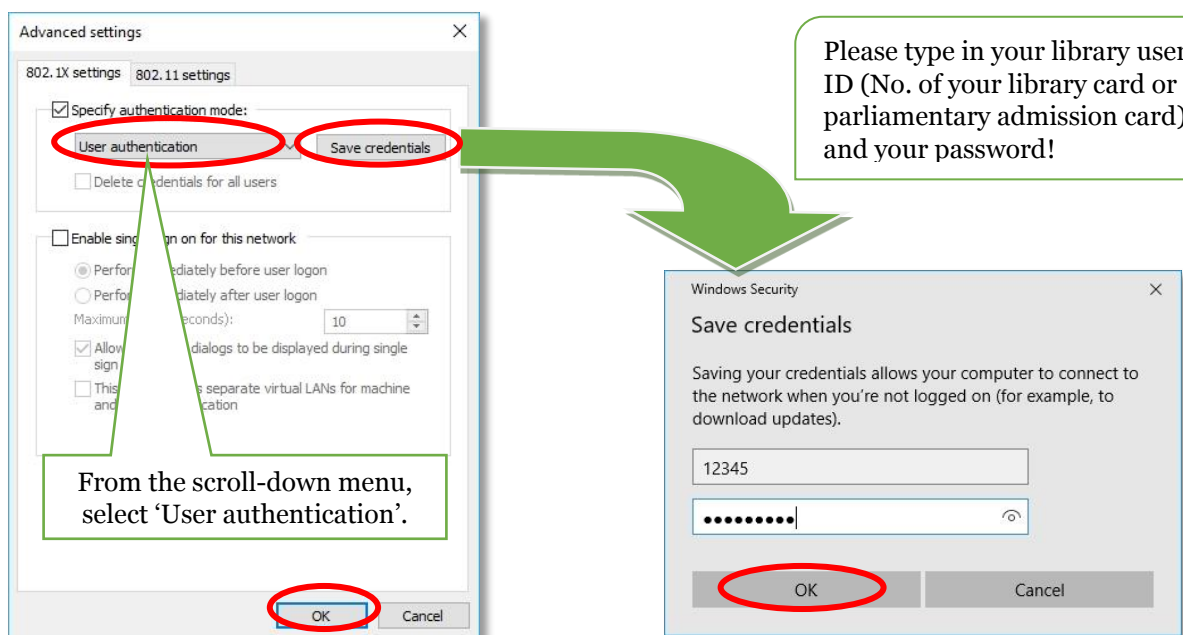
Step 10

- When redirected to 'Security' tab, click 'Advanced settings'



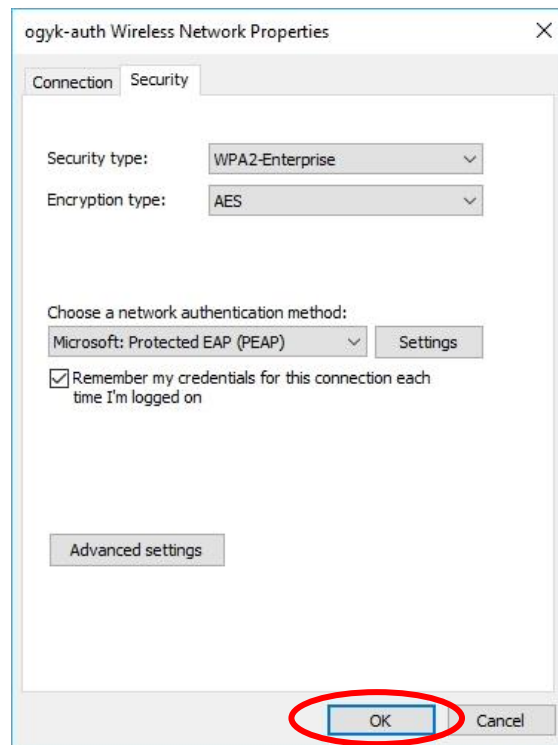
Step 11

- Specify authentication mode as shown below:

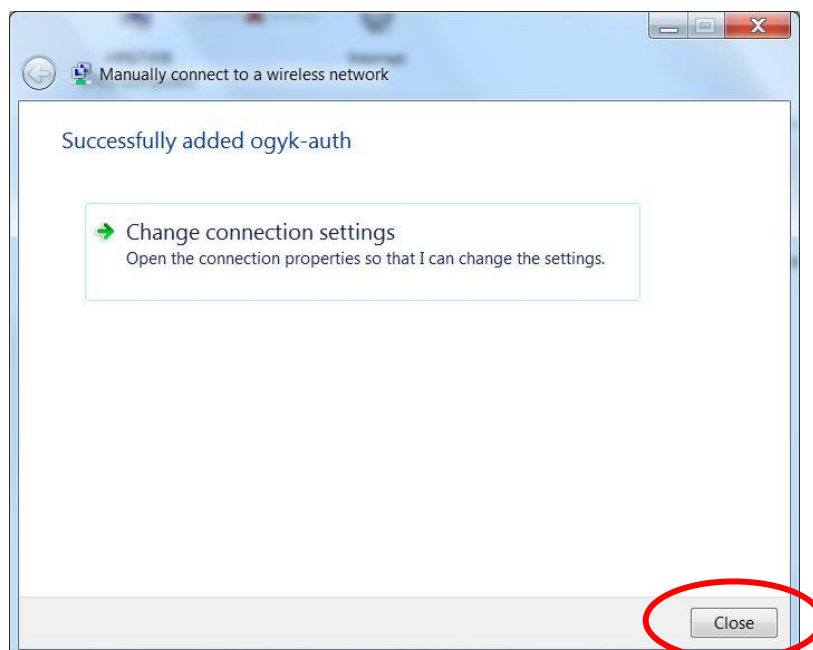


Step 12

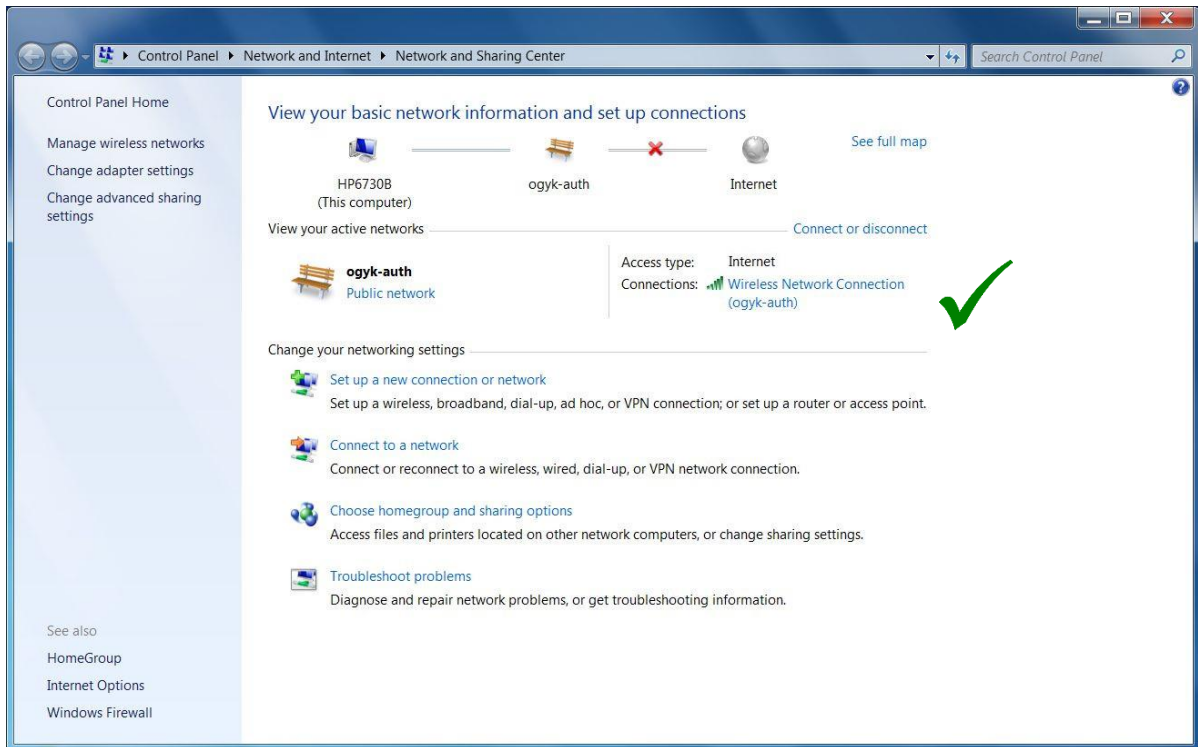
- Returning to 'Security' tab, click 'OK'



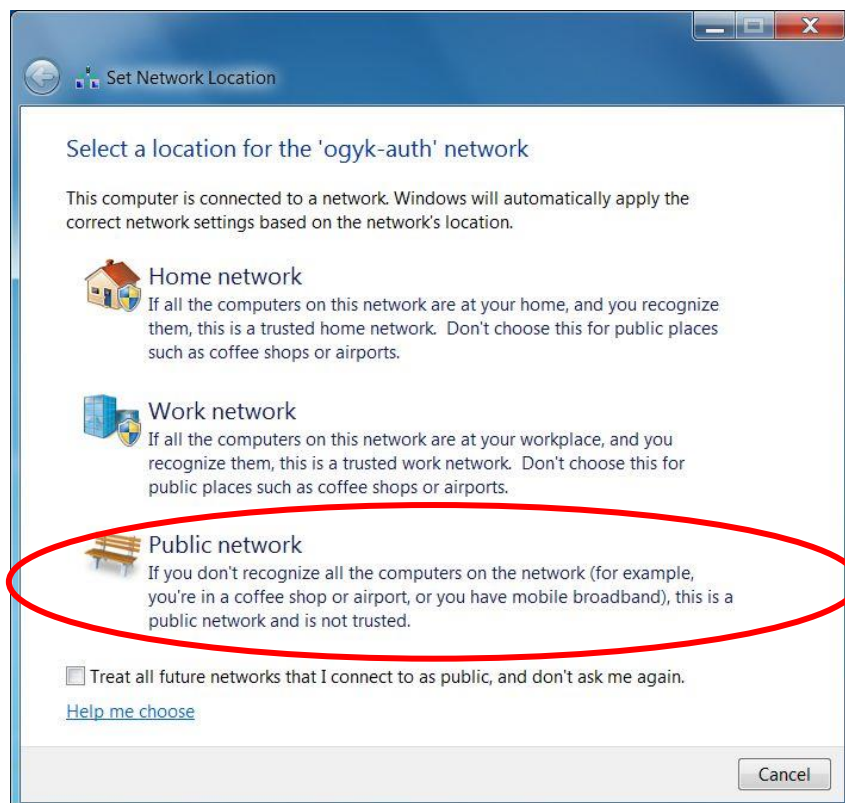
Step 13



Step 14



Step 15



Step 16

